



**SIR JONATHAN NORTH
GIRLS' COLLEGE**

Lionheart Educational Trust

WELCOME TO YEAR 7

TUTOR –

PASTORAL LEADER – MS WILTSHIRE

ASSISTANT PASTORAL LEADER – MRS DUNN

VICE PRINCIPAL – MRS GREAVES

STRUCTURE OF THE DAY



Population A	7.1, 7.2, 7.3, 7.4
Lesson 1	8.30am – 9.30am
Lesson 2	9.30am – 10.30am
Break	10.30am – 10.45am
Tutor Time	10.45am – 11.05am
Lesson 3	11.05am – 12.05pm
Lunch	12.05pm – 12.45pm
Lesson 4	12.45pm – 1.45pm
Lesson 5	1.45pm – 2.45pm

Population B	7.5, 7.6, 7.7, 7.8
Lesson 1	8.30am – 9.30am
Lesson 2	9.30am – 10.30am
Tutor Time	10.30am – 10.50am
Break	10.50am – 11.05am
Lesson 3	11.05am – 12.05pm
Lesson 4	12.05pm – 1.05pm
Lunch	1.05pm – 1.45pm
Lesson 5	1.45pm – 2.45pm

Dining Hall is open from 7.45am – 8.00am
Students wait in year group playground from 8.00am



We don't want any young person to be disadvantaged by low attendance.

Excellence in attendance - not only does this make a difference to students' ability to engage in learning, but these are lifelong habits that are needed to be successful in the workplace too.

Target: 100%

Follow-up action begins: <96%

Holidays are **not authorised** during term time and you may receive a fixed penalty notice.

If you do plan on taking an extended break or holiday, please **complete an absence request form** found on the school website



First bell: 8.25am

Lesson 1: 8.30am

If your child is **late** after 8.30am, they will have a **30 minute after-school detention** on the same day

Your child must be **on time to all of their lessons.**

If they are late to lessons, they will have a **30 minute after-school detention**



Please contact the **school absence line** in the morning to inform us if your child will be absent from school with reason

Try and avoid making **appointments** during school time. However, if unavoidable please do the following:

A couple of days before the appointment, **write a letter** to inform us of this. Include in the letter:

- Date of appointment
- Time of appointment
- Time you will collect your child from school
- Your signature

The Pastoral Leader or Assistant Pastoral Leader will have to sign this for your child to be able to leave the school site.

MEDICAL EVIDENCE MUST BE PROVIDED



Achievement Points

We strive to create **good people** and our behaviour policy is about making the implicit explicit.

We encourage students to demonstrate the **4 Rs**:

- Respect
- Resilience
- Resourcefulness
- Reflectiveness

Their teachers will reward them with achievement points during lessons

Achievement points can lead to further rewards throughout the school year

Behaviour Points

For behaviours that do not follow the college rules and expectations result in behaviour points:

C1 – First warning

C2 – Second warning (30 minute after school detention)

C3 – On-call and removal from lesson (additional consequences)

SCHOOL UNIFORM



School uniform can be purchased from School Wear Solutions:

www.schoolwearsolutions.com

64 London Road, Oadby, Leicester, LE2 5DH

0116 2160665

The following SJN branded items **must** be purchased from the uniform shop:

- Blazer
- V-Neck jumper
- PE T-shirt (short or long sleeve)

Other items which **do not** need to be purchased from the uniform shop include:

- Trousers
- Skirt
- Shirts
- Shoes
- PE trousers
- PE trainers

PLEASE SEE SCHOOL WEBSITE FOR FULL DETAILS ON SCHOOL UNIFORM

UNIFORM



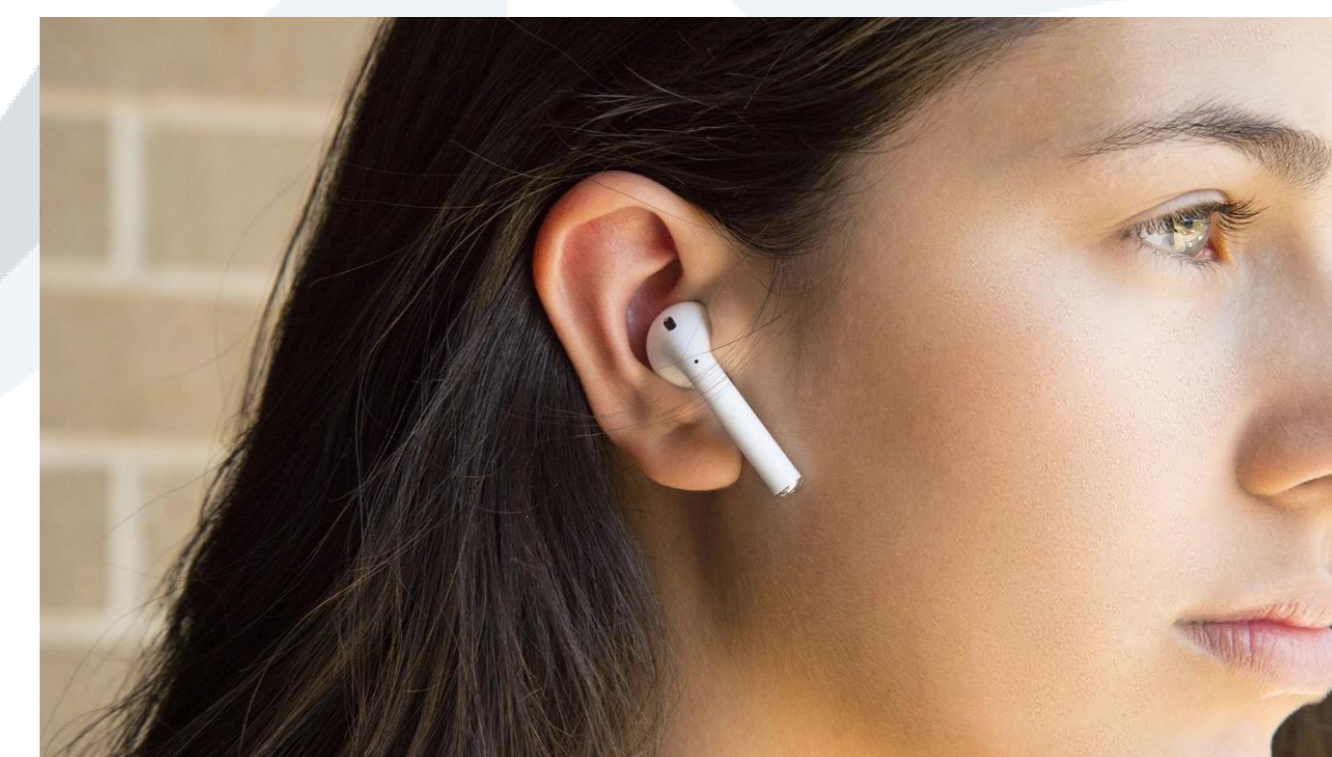
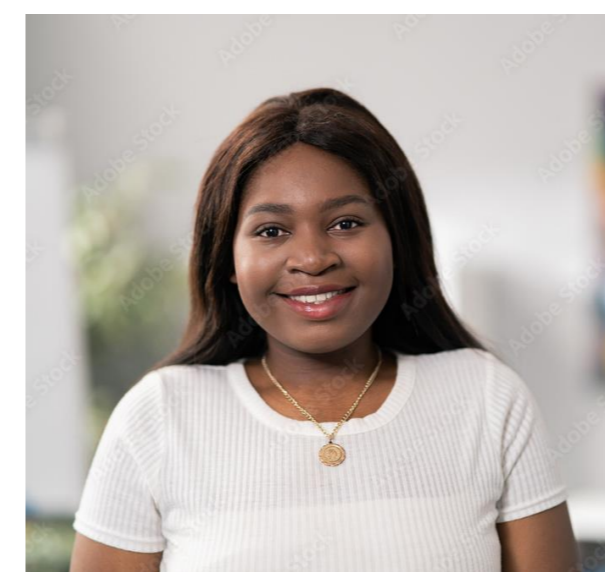
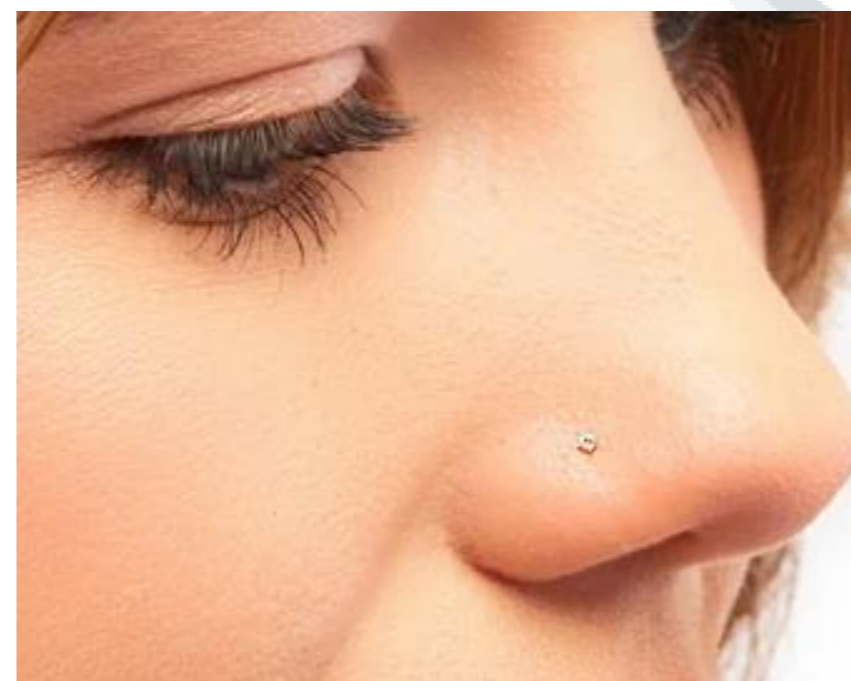
SJN Branded Items



PE leggings

PUPIL CENTRED, POSITIVE AND PROFESSIONAL

UNIFORM DON'TS



PUPIL CENTRED, POSITIVE AND PROFESSIONAL



See key information on:

- Attendance
- Punctuality
- Achievement points
- Behaviour points

Manage **money** and payments:

- Add money to their lunch card
- Pay for trips/visits

Download the **Beehive App** and create a parent account (from Wednesday 31st August).

Through this you can..

Monitor **homework** they have been set

Receive notification of **detentions** if set

See key **updates** from both the school and the Lionheart Education Trust



Typically for Y7/8:

- 20 to 30 minutes per subject – often two or three subjects per evening
- Increases as students start their GCSEs
- Tasks might include revision, worksheets, vocabulary quizzes, essays, practice questions or work set on an online platform.

Homework is set through
Beehive

HOW CAN YOU SUPPORT YOUR CHILD



Encourage routines and habits to build independence

- Pack **bag** the night before
- Have space at home to keep books and school equipment safe and organised
- Have space at home to complete **homework** undisturbed
- Use an **alarm clock**
- If your child brings a packed lunch, encourage them to make their own
- Encourage them to **attend extra-curricular** clubs and activities

TRANSITION DAY



- 8.20am **arrival**
- Use **top gate** so students can go straight in the hall
- Meet the tutor and taster lessons
- 2.30pm **pick up** from **main reception gate**

Parents/carers will not be allowed on school site

- Bring a **packed lunch**. FSM – lunch provided
- Wear comfortable clothes
- **Summer School:** 17th August -19th August
- **Beaumanor Hall Trip:** Friday 2nd September – Total cost for trip is **£15** and outstanding balance needs to be handed in
Pupil Premium students can use their £100 bursary to pay for the trip





Any Questions?



Additional Information

ALL MUST COMPLETE

- Arrangements for getting home tomorrow (transfer day)
- Language preference
- Summer school interest
- Trip payment

**ONLY COMPLETE IF YOU DID NOT ATTEND
TRANSITION EVENING IN MARCH**

College Charter

Medical Questionnaire

To be completed if your
child has medical
conditions